

PENNYRAIL

November 2008

VOLUME 12 NUMBER 11



Chapter Chatter

**Next Meeting Monday,
November 24**

**7:00 pm, The Center, (Former L&N Depot)
Madisonville, KY**

Program by Jim Pearson



A Eastbound UP Freight heads up the Cajon Pass at Silverwood on the new mainline track that now runs through the Pass. Jim Pearson will present a program at our November meeting on this new mainline and the areas that were forever changed due to its construction which included the daylighting the remaining tunnels in the pass. Photo was made on October 20, 2008 as UP 5450 approaches Cajon Summit on it's way east. (Photo by Jim Pearson)

Western Kentucky
Chapter, NRHS, Inc.

111 Reed Place
Madisonville, KY 42431

* * * * *

President
Rich Hane

Vice President
Rick Bivins

Sect. Treas.
Wally Watts

National Director
Wallace Henderson

Director at Large
Bill Thomas

“PENNYRAIL” is the official publication of the Western Kentucky Chapter, NRHS. Send news notes, historical notes and other rail information to:

Editor
Bill Thomas

1025 Lakewood Drive
Madisonville, KY 42431
(270) 825-4623 Home
(270) 339-9482 Cell
e-mail:
bill@fbcmadisonville.com

This Issue

*Tennessee Central
Excursion
Photo Section*

*Regional
Rail Notes
and
October Meeting
Minutes*

Rich's Ramblings

*Membership
Renewal Time!*



**Chapter
Christmas
Dinner**

December 15

6:00 Happy

Half-Hour

6:30 Dinner

**Bartholomew's
51 South Main St.
Madisonville, KY**

From from our President *Rich's Ramblings*

We have had a lot of fun activities this fall. Earlier, we had the annual picnic in Crofton, KY hosted by the bunch from Hopkinsville. Then, the train ride in Tennessee was enjoyed by many of us and the scenery was beautiful. Thanks to Don Clayton for setting up the program and getting our tickets and organizing so well. The food, sidewalk vendors, and the car show in Monterey made for a nice midday stop. On November 1st

Don and Wally had their annual open house which provided some more good food and conversation with friends and of course the chance to see a world class model railroad.

This month is the election of Chapter officers. It is not too late to throw your name in the hat if you would like to help and guide the Chapter. We have a great group and I always look forward to spending time in good conversation and enjoying the programs.

Speaking of programs, if someone has any ideas for a program at the Christmas Party on December 15 at Bart's in beautiful downtown Madisonville, feel free to bring it up with one of the officers. Usually we have a show and tell time or someone might relate an interesting train story or happening in the past. We have had some entertaining slide programs, too. We will have an open area on the second floor at the front of the building so we will be by ourselves for the most part.

Having the Party on Monday evening should be good as Bart's is usually fairly empty at that time and there should not be much of a

(Continued on page 4)

Bowling Green Museum Celebrates Arrival of L&N E8 796!



The much-anticipated arrival of E8 796 is celebrated as R.J. Corman crews move the car body from CSX's main line to it's home on an adjacent track where it will house a museum display in Bowling Green, KY. Photo submitted by Bill Grady, Louisville, KY



Left: Wally Watts entertains guests at the Clayton/Watts Open House and the home of Don Clayton where they share their O gauge layout with friends throughout the year. The open house is held each year in early November. This year as early as possible on November 1. There was good fellowship and great eats!

-submitted by Chuck Hinrichs

Time to Renew!

Please send your dues to Wally Watts, 111 Reed Place, Madisonville, KY 42431. If you know of address or other information changes, please forward them to me, Bill Thomas, electronic information contact for our chapter, 1025 Lakewood Drive, Madisonville, KY, or drop by First Baptist Church, 246 North Main Street, Madisonville.

Special Tennessee Central Excursion October 4, 2008



Our train is ready to depart the TC Museum, Nashville



Riders relax for a trip through the TN countryside.

Motive Power included E8 6902, F7-Bs 715 and 719, and FP40PHR 375.



More photographs on page 5.

Rich's Ramblings Continued

problem from any smokers that may be there. The ventilation is quite good at the front of the building.

I will be looking forward to seeing your happy faces at the next meeting on Monday, November 24, 2008, at 7pm at the Center and again at the Christmas Party on December 15th. There is no formal meeting in December.

NRHS Mission Statement

National Railway Historical Society, Inc. Mission Statement - The National Railway Historical Society promotes railway heritage preservation and educates its members and the public about rail transportation, its history and impact, with a focus on North America.

Objectives

1. To foster the experience of rail transportation
2. To develop and expand educational services and programs
3. To build and maintain archives, to encourage and to support archival activities, and to disseminate information in archives
 - A. To increase collaboration between existing archives
 - B. To develop listing of National and Chapter archives
4. To support preservation of memorabilia and artifacts
5. To facilitate association and networking

Extreme Trains!



Meet Host Matt Bown

>> Check out his favorite Extreme Trains moments

SERIES PREMIERE TUESDAY,
NOV 11TH AT 10PM/9C
On the History Channel

Links of Interest

National Railway Historical Society

www.nrhs.com

Railway Preservation News

www.rypn.org/

Kentucky Railway Museum

www.kyrail.org/

Indiana Railway Museum and French Lick Scenic Railway

www.indianarailwaymuseum.org

Indiana Transportation Museum

www.itm.org/

Illinois Railway Museum

www.irm.org/

Tennessee Central Railway Museum

www.tcry.org/

PENNYRAIL™ is your publication. If you have photographs or other material of current or historical interest that you would like to share with Chapter members, your editor would appreciate hearing from you. Your material will receive the best of care while being readied for publication. Your help is appreciated. *Bill Thomas, editor*

bill@fbcmadisonville.com

**SEND YOUR ARTICLES AND PHOTOS TO:
BILL THOMAS
bill@fbcmadisonville.com**

AS RAILFANS WE ARE OFTEN AT TRACKSIDE AND IN POSITION TO OBSERVE EMERGENCY CONDITIONS THAT COULD AFFECT RAILROAD SAFETY OR SECURITY. KEEP THESE NUMBERS HANDY TO REPORT INCIDENTS.

BNSF 800-832-5452

CN/IC 800-465-9239

CSX 800-232-0144

NS 800-453-2530

UP 888-877-7267

Amtrak 800-331-0008

Photo Section



Left: Sunny shot of FP40PHR at Monterey, TN.



Right: TC 103, Observation Car (rebuilt SRR as Private Car/ Auto Train 9012) brings up the rear in Monterey.



Left: At Monterey, TN, our train met an excited crowd of festival attendees who had not seen rail passengers in many years.

Continued on page 7.

Western Kentucky Chapter, NRHS

The Center (Former L&N Depot),
Madisonville, KY

October Treasurer's Report was approved.

Beginning Balance \$1,798.83

Income

Nat. Dues	\$608.00
Ch. Dues	\$00.00
Donations	\$100.00
Raffle	\$3.00
Video	\$00.00
Other	\$00.00
TOTAL	\$711.00

Adjusted Balance \$2,509.83

Expenses

Nat. Dues	\$00.00
Postage	\$21.00
Printing	\$51.56
Video	\$00.00
Supplies	\$00.00
Other	\$00.00
TOTAL	\$72.56

Ending Balance \$2,437.27

MEMBERSHIP Total - 64

DIRECTORS REPORT: Wallace Henderson reminded those who have not yet received their dues statements to check with Bill Thomas who is the electronic contact person for the chapter. Those who have received statements, please remit checks to the Treasurer as soon as possible.

OLD BUSINESS: No old business.

NEW BUSINESS: The nomination of new officers was held and all current officers stood for nomination except the vice president. Ricky Bivins declined the position, and Chuck Hinrichs was nominated and accepted. Nominees are: President-Rich Hane; Vice President-Chuck Hinrichs; Secretary/Treasurer-Wally Watts; National Director-Wallace Henderson; Director at Large-Bill Thomas (editor).

ACTIVITIES: The Christmas dinner will be Monday, December 15, 6:00 pm, at Bartholomew's, 51 South Main Street, Madisonville. Ricky also reminded everyone about the Clayton/Watts Open House, Saturday, November 1.

ANNOUNCEMENTS: Rich reports Ron Stubblefield is making slow but steady recovery from his bout with pneumonia. Our visitor Chad Cowan reports the Kentucky Railway Museum wants to restore a GP-10 locomotive which is in running condition, and paint it in original Illinois Central colors.

LOUISVILLE, Ky. - Louisville's light-rail movement faded about four years ago, but traditional train service may be getting a fresh look, the Courier-Journal reports. Elected officials from Jefferson, Hardin and Meade counties are among 100 passengers who plan to take a leisurely three-hour, round-trip train ride between Louisville and Cecilia, Ky., just west of Elizabethtown, tomorrow.

Mass transit supporters view the trip on the Paducah & Louisville Railway, which runs roughly along Dixie Highway and through Fort Knox, as the first step toward establishing a passenger rail system between Louisville and the growing Army post.

"My hope is that we can build some critical mass in terms of support and possibly do some sort of analysis of what it would cost to put commuter (rail) cars on that line," said Jim King, president of Louisville's Metro Council.

The Transit Authority of River City and council members have been discussing commuter rail for months. Tomorrow's excursion is intended to draw attention to the possibility of passenger service and start gauging whether local leaders want to go forward. If they do, the next step would be a study outlining the costs -- and feasibility -- of the project.

While the demonstration trip is scheduled to take 90 minutes one way at 35 mph, actual commuter trains could reach speeds up to 60 mph, said A.V. "Tony" Reck, the railway's president and CEO. The trip takes 45 minutes to an hour by car.

"We certainly have an interest in expanding rail," said Barry Barker, TARC's executive director. He estimates it would cost \$50 million to \$75 million to create a commuter rail line, with operating costs of at least \$4 million annually. Under Barker's scenario, a commuter rail line would cost substantially less than the city's light-rail project, which was suspended in 2004 with a price tag of \$661 million.

Before that, the city's experience with passenger rail in recent years was with an Amtrak train connecting Louisville and Chicago. The Louisville-Indianapolis leg of the route took five hours because poor track conditions meant the train couldn't exceed 30 mph. The route was discontinued in 2003 after four years amid low ridership.

Tomorrow's demonstration run is the brainchild of two groups -- the nonprofit Coalition for the Advancement of Regional Transportation and the Kentucky-Indiana Rail Advocates -- and has the financial backing of local governments.

(This is a portion of an item which appeared Nov. 7, 2008, in the Courier-Journal.)

- Submitted by Chuck Hinrichs

**No PennyRail
in December!**

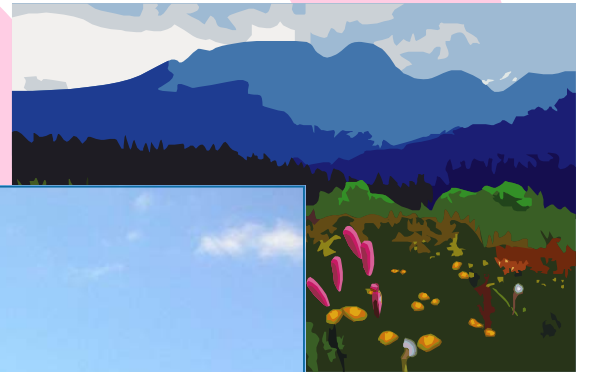
More TC Excursion Photos



Above: Monterey got something few branch lines ever see, NEW TRACK! Sand business just beyond the small town called for major rehab of the track through the city. Are those ties not beautiful?



Above: IC Caboose 9380 brings up the rear after the train is turned (actually run around by locomotives) at the sand plant, just northeast of town. The main line extends to the east in the background.



Left: The bulldog-nosed E8, crowded by the observation platform, is ready to head back down the mountain toward Nashville from Monterey. FP40 PHR 375 led the way home.

Regional Rail Notes

Recently I saw this Hudson Bay Railway unit at the Fulton Yard. Apparently this locomotive has just been out shopped as the paint is fresh and there is no dirt or grime evident. I checked the roads roster and this unit (5005) is not shown but SD50s #5000 and 5008 are shown. So I am pretty sure this is a SD50 also. Hudson Bay Railroad is a short line Canadian line that is a member of the Omnitrax family of railroads.

Also, a visit to downtown Wingo shows that the Rails to Trails group has found a use for the old IC crossing wig-wag tower that has stood roadside for many years .

- photos and comments submitted by Jim Futrell



TIMETABLE #110

FOR THE GOVERNMENT OF RAILFANS ONLY

- Chapter Christmas Dinner, December 15, 6:00 pm, Bartholomew's, 51 South Main, Madisonville, KY
- sHOW Modular Railroad Club Train Show, Bowling Green, KY - Date and Times not yet available.
- Jim Bengert Open House and Operating Session:
Friday December 5.....5pm-8pm.
Saturday-December 6.....12-3pm and 5pm-8pm
Sunday-December 7.....12-3pm and 5pm-8pm

VISIT THE CHAPTER WEB SITE: <http://www.westkentuckynrhs.org>

PENNYRAIL

% Bill Thomas, Editor
1025 Lakewood Drive
Madisonville, KY 42431